

From Sea to Shining Sea

Inspired by a red and white antique quilt, Marianne Fons created this blue and cream version using blocks that form a wave pattern. "This would be perfect as a Quilt of Valor for a sailor," says Marianne.

quilt by **MARIANNE FONS** machine quilted by **LUANN DOWNS**

MATERIALS

- 15 fat quarters* assorted medium and dark blue prints and stripes
- 15 fat quarters* assorted cream prints and stripes
- $\frac{5}{8}$ yard gold print for binding
- 5 yards backing fabric
- 74" × 88" rectangle of quilt batting
- *fat quarter = 18" × 20"

CUTTING

Measurements include $\frac{1}{4}$ " seam allowances.

FROM BLUE PRINT AND STRIPE FAT QUARTERS, CUT A TOTAL OF:

- 82 ($2\frac{1}{2}$ "-wide) strips. From strips, cut 40 ($2\frac{1}{2}$ " × $6\frac{1}{2}$ ") C rectangles, 160 ($2\frac{1}{2}$ " × $4\frac{1}{2}$ ") B rectangles, and 220 ($2\frac{1}{2}$ ") A squares.

FROM CREAM PRINT AND STRIPE FAT QUARTERS, CUT A TOTAL OF:

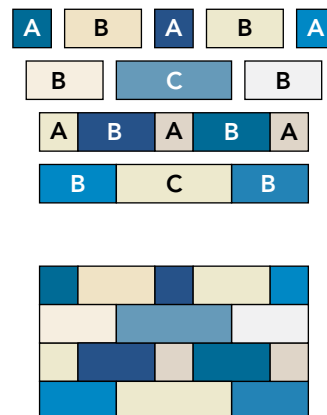
- 82 ($2\frac{1}{2}$ "-wide) strips. From strips, cut 40 ($2\frac{1}{2}$ " × $6\frac{1}{2}$ ") C rectangles, 160 ($2\frac{1}{2}$ " × $4\frac{1}{2}$ ") B rectangles, and 220 ($2\frac{1}{2}$ ") A squares.

FROM GOLD PRINT, CUT:

- 8 ($2\frac{1}{4}$ "-wide) strips for binding.

BLOCK ASSEMBLY

1. Lay out 3 blue print A squares, 4 cream print B rectangles, 1 blue print C rectangle, 3 cream A print squares, 4 blue print B rectangles, and 1 cream print C rectangle as shown in *Block Diagrams*.
2. Join into rows; join rows to complete 1 block. Make 40 blocks.



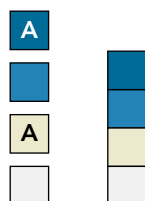
Block Diagrams



This pattern meets the guidelines established by the Quilts of Valor Foundation. To learn more about QOV, go to FonsandPorter.com/qov.

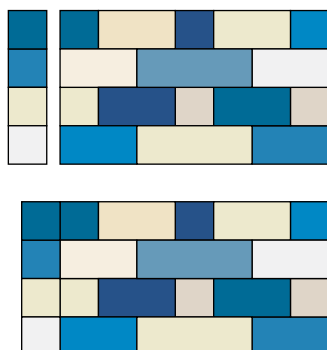
PIECED SASHING STRIPS ASSEMBLY

1. Join 2 blue print A squares and 2 cream print A squares as shown in *Sashing Unit Diagrams*. Make 50 Sashing Units.

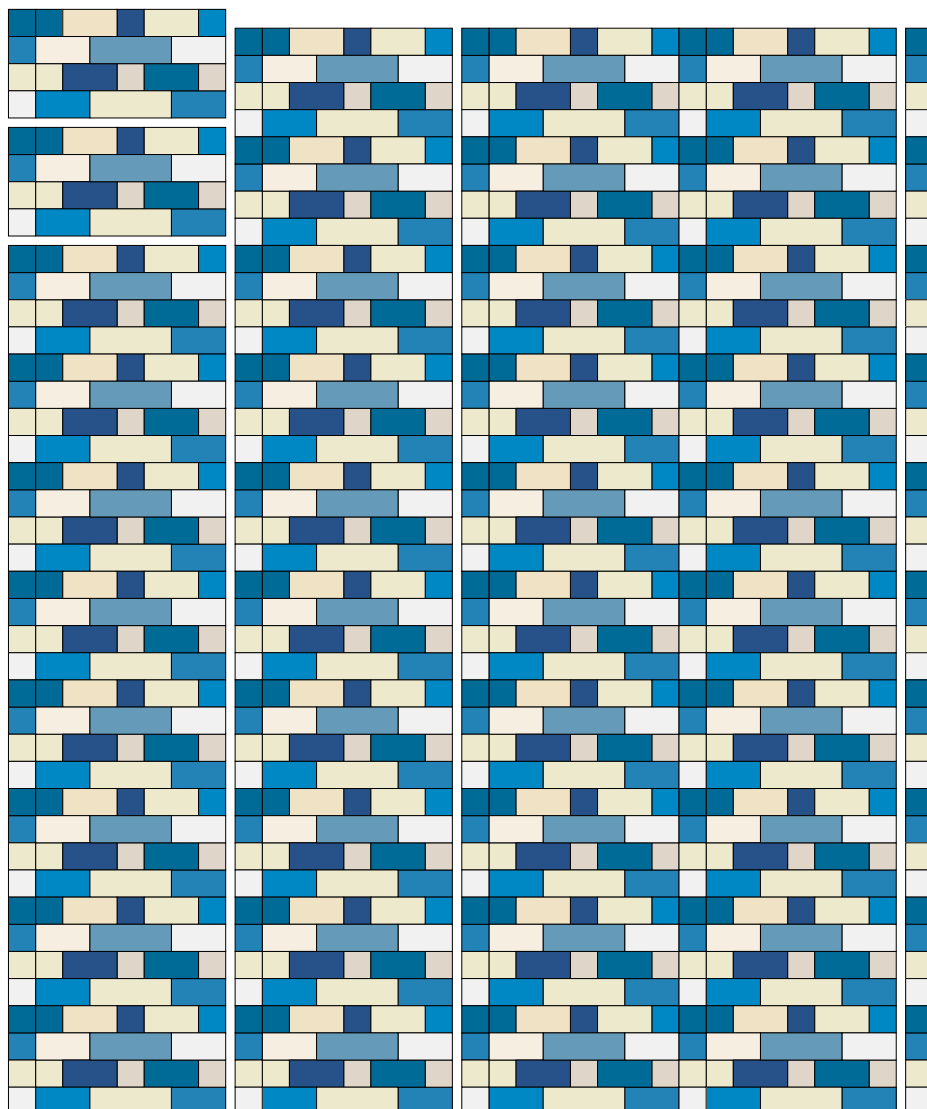


Sashing Unit Diagrams

2. Add 1 Sashing Unit to the left side of each block as shown in *Sashed Block Diagrams*.



Sashed Block Diagrams



Quilt Top Assembly Diagram

QUILT ASSEMBLY

1. Lay out sashed blocks and remaining Sashing Units as shown in *Quilt Top Assembly Diagram*.
2. Join into rows; join rows to complete quilt top.

FINISHING

1. Divide backing into 2 (2½-yard) lengths. Join panels lengthwise.
2. Layer backing, batting, and quilt top; baste. Quilt as desired.
3. Join 2¼"-wide gold print strips into 1 continuous piece for double-fold binding. Add binding to quilt. ◀



MARIANNE FONS

Marianne Fons is a beloved leader in the quilting community. One of the namesake founders of *Fons & Porter*, Marianne now devotes her time to various quilting initiatives, including the Quilts of Valor foundation and the Iowa Quilt Museum in Winterset, Iowa.